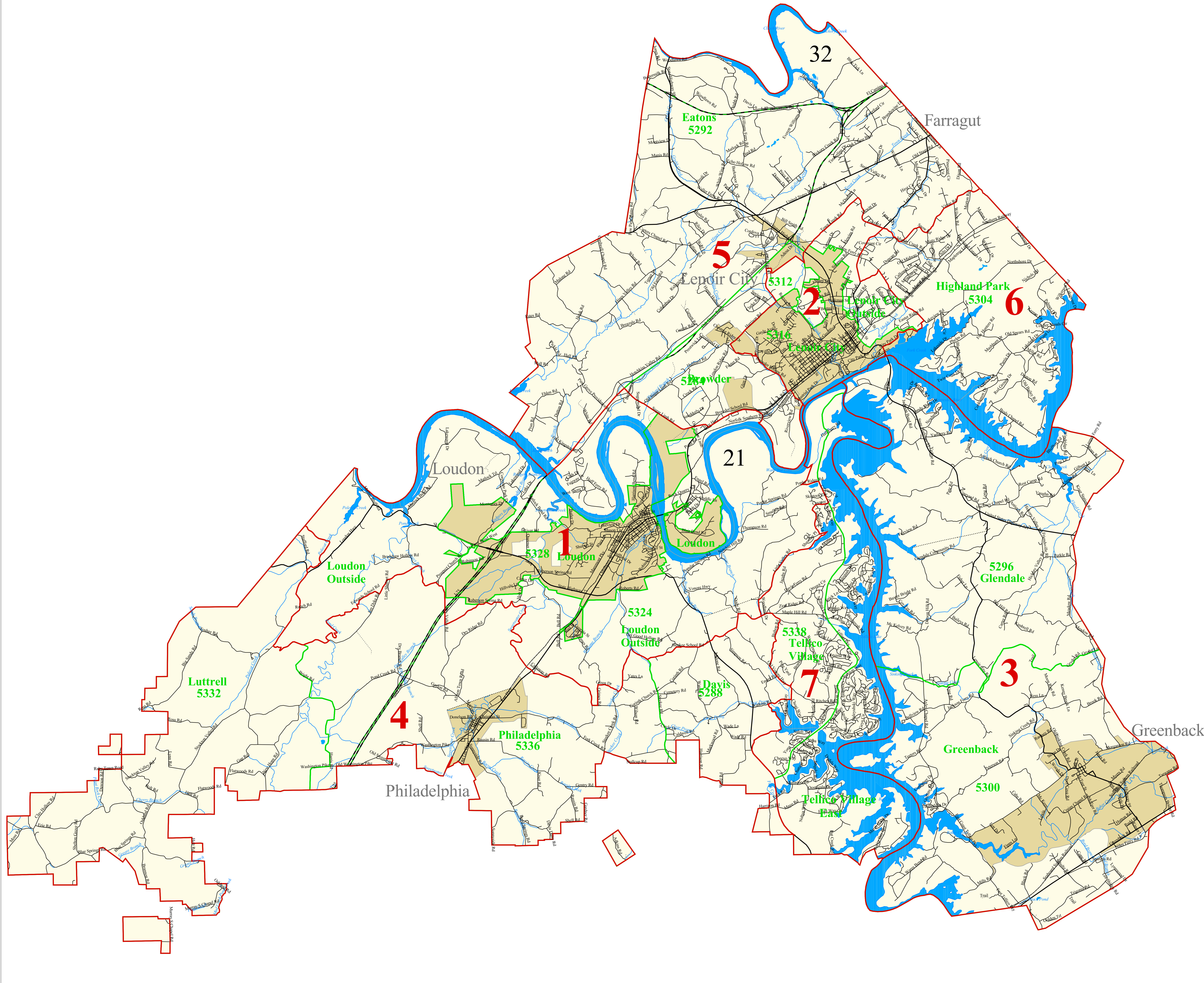


Loudon County 2006 County Commission Districts and Voting Precincts



Legend

- County Commission District
- Voting Precinct
- Roads
 - Interstate
 - Major
 - Local
 - Other
- Other Census Block Boundaries
 - Railroad
 - Powerline, Pipeline
 - Ridgeline, Fence-line
 - Nonvisible Feature
 - Water
- Rivers/Lakes
- City, Town
- County
- County Commission District
 - 1
 - 2
 - 3
 - 4
 - 5
 - 6
 - 7
- State House District
 - 21
 - 32

1 County Commission District Number
1234 Voting Precinct Number

2000 TOTAL POPULATION = 39,086

2000 Population by District

Ccd	Totalpop	Numcoms	Optpop	Dev	Pct dev	Blpop	Pct blpop
1	7443	2	7817	-374	-4.8	182	2.4
2	8141	2	7817	324	4.1	105	1.3
3	4069	1	3909	160	4.1	10	0.2
4	3736	1	3909	-173	-4.4	30	0.8
5	8076	2	7817	259	3.3	93	1.2
6	3885	1	3909	-24	-0.6	23	0.6
7	3736	1	3909	-173	-4.4	4	0.1

2000 Population by Precinct

Vtd	Spl_house	Name	Totalpop	Whpop	Blpop	Totalpop18	Blpop18	Ccd
5284	X	Browder	2241	2073	76	1676	57	5
5288		Davis	1023	1002	3	754	1	4
5292	X	Eatons	5835	5708	17	4559	8	5
5296		Glendale	1824	1793	1	1453	1	3
5300		Greenback	2245	2153	9	1735	5	6
5304		Highland Park	3885	3786	23	2975	17	6
5312	X	Lenoir City Outside	1770	1701	32	1347	14	2
5316	X	Lenoir City West	6371	5952	73	4765	52	2
5324		Loudon Outside	2962	2867	38	2250	26	1
5328		Loudon West	4481	4167	144	3528	108	1
5332		Luttrell	714	709	2	540	2	4
5334		Tellico Village East	2573	2549	3	2472	3	7
5336		Philadelphia	1999	1920	25	1448	21	4
5338		Tellico Village	1163	1152	1	1014	1	7

This Map Represents:
Districts adopted by the County Legislative Body on _____ (date adopted)

(Signature) (Title) (date)

(Signature) (Title) (date)

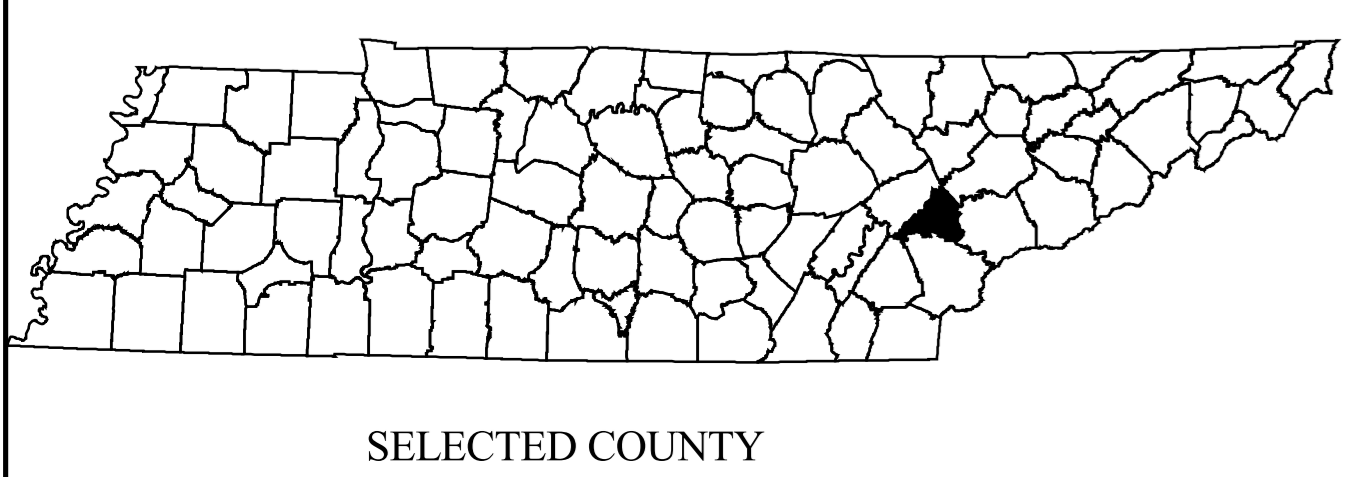
Precincts adopted by the County Election Commission on _____ (date adopted)

(Signature) (Title) (date)

(Signature) (Title) (date)

This map was printed by the Office of Local Government, a Division of the Office of the Comptroller of the Treasury of the State of Tennessee. This map was generated using digital data obtained from the US Census Bureau.

STATE OF TENNESSEE
COMPTROLLER OF THE TREASURY
OFFICE OF LOCAL GOVERNMENT
James K. Polk State Office Building
505 Deaderick Street, Suite 1700
Nashville, Tennessee 37243-0277
Phone: (615) 401-7773



Created On: May 15, 2006
Project Location: C:\redist\2000\CountyData\Loudon\certification.apr